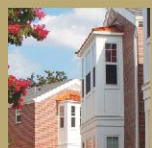
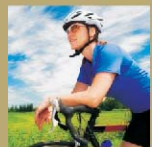
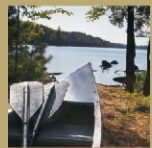


Back Cover



THE COURT
AT
RIVERPOINT



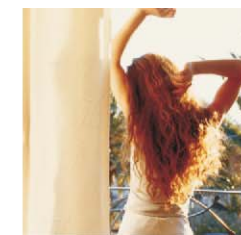
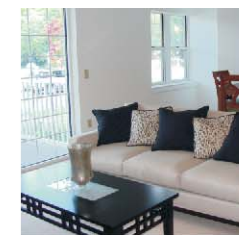
6111 Granby Street
Norfolk, VA 23505

www.myriverpointcondo.com

Front Cover



THE COURT
AT
RIVERPOINT
At the Center of Norfolk Living



Inside Left Side

Enjoy The Norfolk Life.

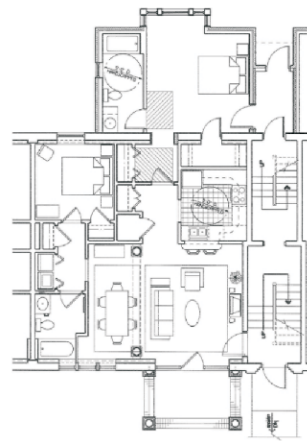
Located on historic Granby Street, The Court at Riverpoint offers spacious floor plans with private balconies and a gated courtyard. These stately brick condominiums are nestled in a well established neighborhood surrounded by natural inlets. Close to shopping and at the very center of Norfolk, The Court at Riverpoint is at the heart of Norfolk life.

Floor Plans

The Nansemond

2 Bedroom 2 Baths

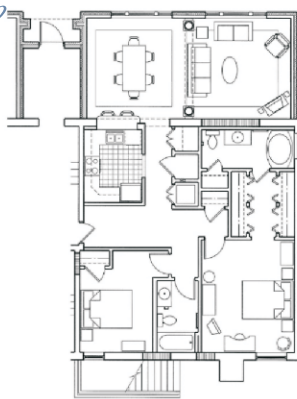
- 2 Units (Handicapped) ■
- 1111 Sq. ft. ■
- Patio ■



The Elizabeth

2 Bedroom 2 Baths

- 2 Units ■
- 1195 Sq. ft. ■



Home Features

- 2 & 3 Bedroom Homes
- Spacious Floor Plans
- Large Master Suites with Walk-in Closet
- Gourmet Kitchens
- Private Balconies
- Breakfast Bar
- Open Great Room
- Ample Storage
- In-suite Laundry



Inside Right Side

The Lynnhaven

3 Bedroom 2 Baths

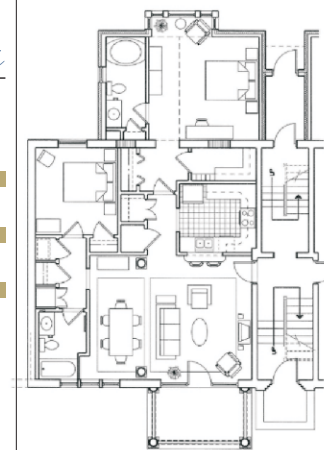
- 2 Units ■
- 1451 Sq. ft. ■



The Lafayette

2 Bedroom 2 Baths

- 2 Units Up - 2 Units Down ■
- 1215 Sq. ft. ■



The James

2 Bedroom 2 Baths

- 22 Units ■
- 1115 Sq. ft. ■
- Balcony / Patio ■

Amenities

- Convenient Location
- Gated Courtyard
- Community Room with Kitchenette, Flat Screen Tv's & Poker Table
- Secure Video Call Boxes
- High Efficiency Dual Pain Windows
- Masonry Construction
- Reserved Parking
- All New Systems Including : HVAC, Electrical, Plumbing & Hot Water Heaters
- Low Condo Fees - Includes Water, Sewage, Trash & Master Building Insurance

Tax Abatement
All homes are tax abated,
saving homeowners thousands of dollars.

757-383-6555
KATIE HOWLETT & KATHRYN HOOVER
NANCY CHANDLER ASSOCIATES

